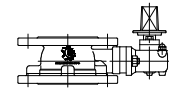
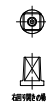
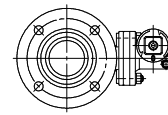
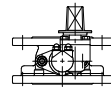


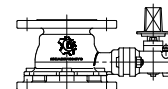
250V用0.6A



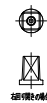
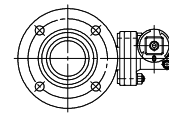
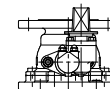
2種  $\phi 75 \times 100L$



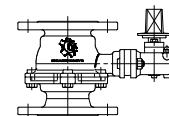
250V用0.6A



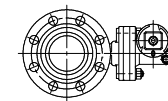
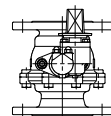
2種  $\phi 75 \times 150L$



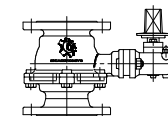
250V用0.6A



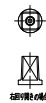
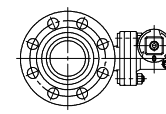
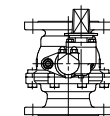
2種  $\phi 75 \times 200L$



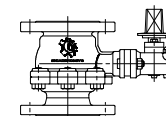
250V用0.6A



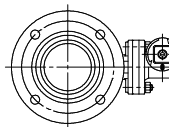
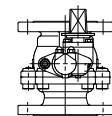
3種  $\phi 75 \times 200L$



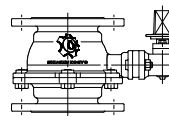
250V用0.6A



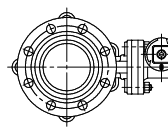
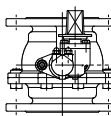
4種, 5種  $\phi 75 \times 200L$



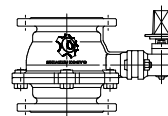
250V用0.6A



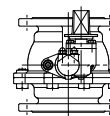
2種  $\phi 100 \times 200L$



250V用0.6A



3種  $\phi 100 \times 200L$



D 0 0 0 L 2 1 0 0 3 D X F

準JWWA B 126 水道用補修弁

キャップ式 ステンレス製補修弁サSTOP SDS形 (外形図) 尺度1/8 (A2)